



OCEANWORLD AQUARIUM



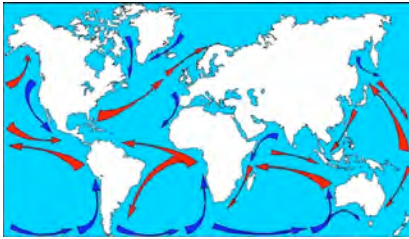
CLASSROOM SPLASH ACTIVITY

INFORMATION SHEET AND WORK SHEET

SENIOR



Ocean currents and sea pollution



Do you know what an ocean current is?

There are 2 types of ocean current : there are the cold ocean currents (in blue on the map) and the warm (in red on the map).

In Ireland, we are under the influence of the **Gulf Stream** ! It's a warm ocean current.

Do you know what the role of the ocean currents are ?

They serve to **regulate the water temperature** : they warm the coldest regions, and they cool the warmest areas. **It's a water displacement.**

What is the link between ocean currents and sea pollution ?

All waste discharged in the sea is displaced by these currents so they **pollute all seas and destroy the natural environment for marine life !**

Some sad examples : oil disaster Erika in 1999 with 300 000 dead birds, 600 km of polluted beaches and 10 000t of carcinogenic waste.

Sea animals and birds become entangled in plastics and they drown or mistake the waste for prey and eat it.



We are all concerned so be responsible !!

Keep your waste and put it in a rubbish bin, or recycling.

Respect your environment, even if it's not your native region ...

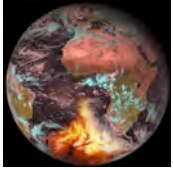
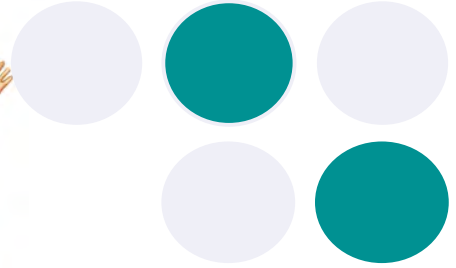
If you see waste on the beach, don't think "It's not mine, so I won't pick it up and put it in a bin".

In the North Pacific, there was found to be 6 times more plastic in the water than algae or plankton.

Think of your future !



Global warming and consequences



Global warming disrupts ocean currents and the water temperature. Animals move to others countries, some more sensitive to temperature differences die. Take the example of the great barrier reef in Australia !



CORAL IS AN ANIMAL !



It's the largest barrier reef in the world, 2600 Km ! It's home to over 1500 species of fishes and crustaceans. (third photo)

Do you know that it's the **oldest animal in the world** ? The scenery is idyllic as the coral grows well in warm turquoise water. (second photo)

It is part of the UNESCO world heritage list



But this natural wonder is in danger !

Global warming and pollution are a real menace for it !

When the **temperature is too warm**, coral loses its colour and dies leaving only a skeleton.

This is known as "coral bleaching". When the coral dies it means the lost of habitat for many fish.

The increase in temperature leads to an **increase in the number of starfish** which feed on the coral causing huge damage. **Too many tourists** come to visit this famous site and cause significant damage



Great Barrier Reef



Piranha is a carnivorous fish with sharp teeth. He lives in the freshwaters of South America. He measures up to 25 cm. He lives **only in groups**, if he is alone he never attacks. He doesn't attack humans but if he tastes blood, the animal instinct of predator returns.



Thornback ray lives in South Africa, the Mediterranean Sea and we can find her in Great Britain and in Ireland. She can survive up to 500m in depth and can measure up to 115 cm. She has **curved spines** on her back and on her vertebrae giving rise to her name "thornback ray". She eats **small fish and molluscs**.

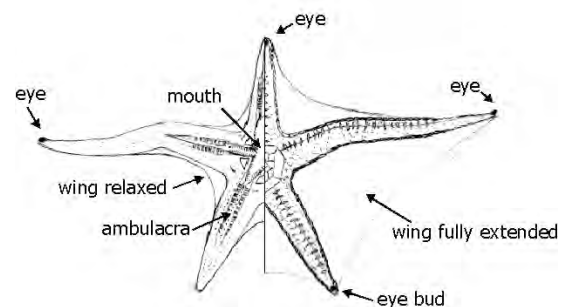
STARFISH ANATOMY

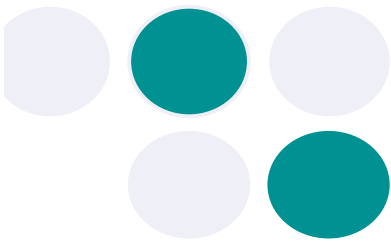
You can find **Starfish** in every ocean and there are many species !

They are really special because **if they lose an arm, it can grow back again**, like a lizard with his tail !

Do you know that they have **two stomachs** ?

She can leave one of her two stomachs outside of her body to enable her to feed on prey larger than herself.





Seahorses live in temperate and tropical waters. There are many species of seahorses and they can measure up to 15 cm.

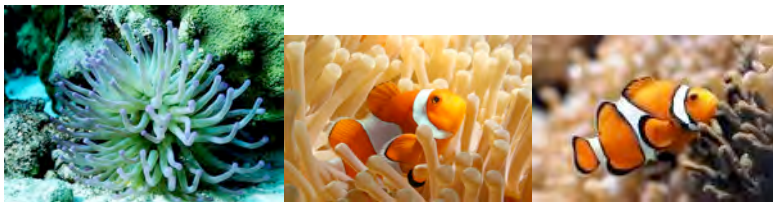
It's an old animal ! They have been on Earth for over **40 million years**.

He can swim thanks to his dorsal fin so he moves vertically. He is the **slowest swimmer** in the world !

He likes clinging to seaweed and it's easy for him to find prey : as he's so well camouflaged. He sucks his prey with his straw shaped mouth.

It's the only animal where **the male of the species is pregnant** !

He can have up to 200 babies at one time !

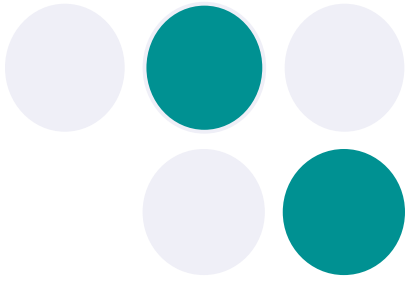


Clownfish like the famous Nemo live in warm waters. You won't find him in the Atlantic Ocean, only in temperate seas. He can measure up to 15 cm and you can recognize the female because she is bigger than the male.

Nemo can't live without anemones.

The anemone is a carnivore but **it can't kill** clownfish because of their special skin ! In fact, his **skin has more sugar** than protein so the anemone is tricked into thinking that it's not prey ! Each one has a role in this balance : the anemone's tentacles protect Nemo from his predators and Nemo protects the anemone from the other fish who want to eat her tentacles.

Clownfish can lay down their eggs on the surface of the anemone. It's the dad who takes care of the eggs. They are born in the darkness 10 days after being laid.



QUIZ



What is an ocean current ? Name one.



Where is the Great Barrier Reef ?



What is coral bleaching ? What is the consequence ?



Name one country where you can find piranha.

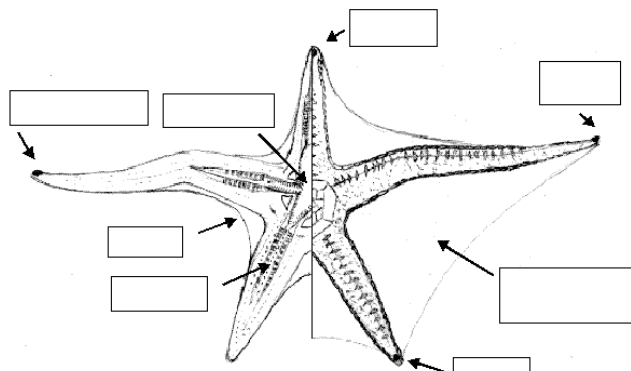


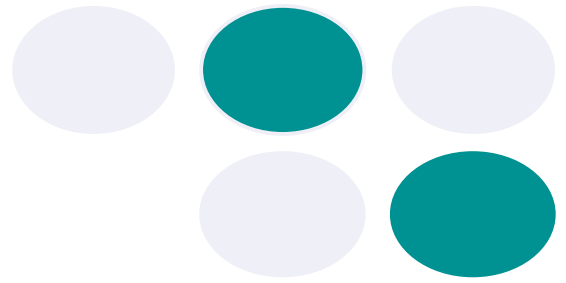
How does the starfish eat prey bigger than herself ?



Who is the slowest swimmer in the world ?

Can you name the starfish body parts?





QUIZ



What is coral ?



How many kind of sharks have you seen in the aquarium ?



What is the name of the turtle ?



Who lives with Nemo ?



Why it is very important for him to live with her ?



What is the only male sea creature that can be pregnant ?



Who wants to be touched ?



Why is throwing rubbish on the beach or in the ocean dangerous ?
